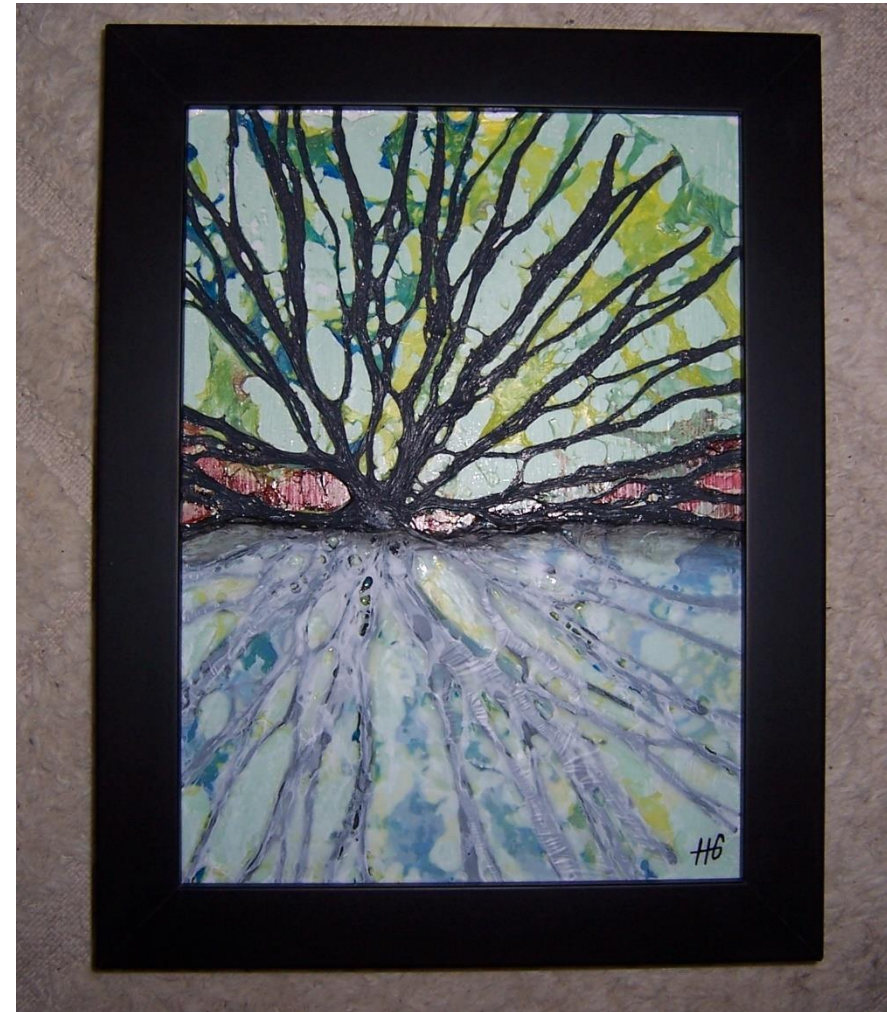




Hanna Gorman

Hana Gorman is a mixed-media artist working with a variety of materials, from traditional to innovative. Starting her career as a marionette designer and art educator, she has moved on to painting, small-scale sculpture and jewelry design, working primarily in polymer clay.

This one-of-a-kind, nature-inspired framed collage painting measures 10 X 13. You'll never guess what material she reused for texture!





Gina at last year's fundraiser/SWAPAPALOOZA!

Gina is a busy, talented, local photographer with a beautiful studio right on the river on Park Street. Gina has been a consistent supporter of SEEDS and is offering a \$100 gift certificate for a photography session. Thank you Gina!

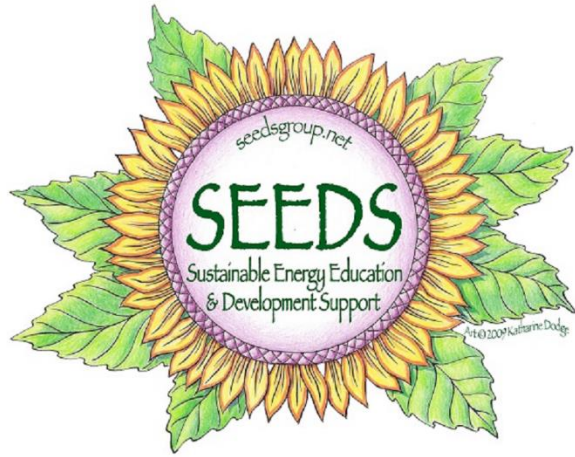


Overnight at Ledges, Hawley



Spend a night along the beautiful waterfalls of the Wallenpaupack Creek. Stay in their best available suite Sun.-Thurs. This is a real treat for a romantic night away, or gift for someone you love.





Can you see yourself here for a weekend?

2 Night Stay at Cabin in Dyberry

Enjoy a 2 night stay at our cabin in the woods in Dyberry – 7 miles north of Honesdale, next to Dyberry Creek with fishing access and surrounded by State game lands very quiet and secluded. Cabin has 2 bedrooms, one Queen, one pull-out King, possible to add more sleeping space. Full kitchen, bathroom, living room, wood stove, screen porch with futon. Bikes available. Hiking to nearby Tanners Falls, 2 nearby waterfalls, hunting.





Maggie Sampson Artwork

This photo doesn't begin to do this piece justice – so come check it out more closely.

Local artist, Maggie Sampson, is a graduate of the prestigious Rhode Island School of Design. This framed oil on canvas measures 37 1/2 x 49 1/2 inches.



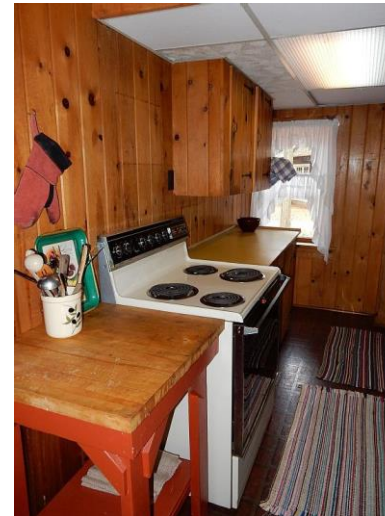
Week long Secluded Camping Site

Camp on secluded land in beautiful Abramsville in northern Wayne County, PA. Features a stream and small pond, fishing, swimming, a large picnic pavilion and tables, fire rings and provided firewood, comfortable two-seater outhouse, and direct access by vehicle. Tune out the electronics and tune into nature! Water available via outdoor hose on neighboring (owner's) property. Limited to twelve people.



2 Nights at Lacawac's Ice House

Spend two nights at the newly renovated Ice House Cabin at Lacawac Sanctuary. Spend the day hiking the trails and take in the natural beauty of a protected glacial lake. Bring your own toiletries, linens and meals with exclusive use of the Ice House, which includes bathroom and kitchen. Sleeps 5. Offer good for August-October. Contact Lacawac to schedule at info@lacawac.org.





Beekeeper Mentorship with Jeff Sidle

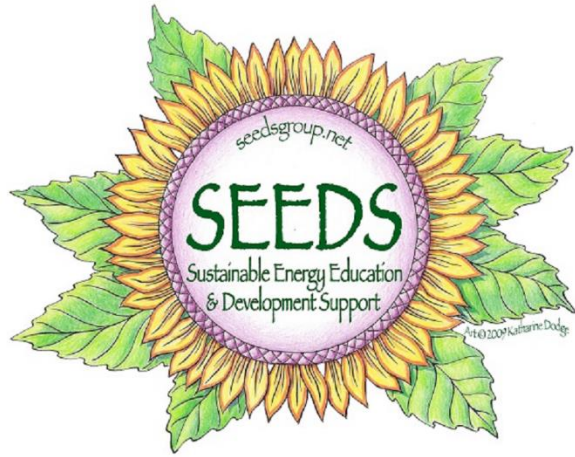


Hawley beekeeper and experienced mentor, Jeff Sidle, will mentor a new beekeeper or beekeeping couple. This includes: 1. advising them on what equipment, preparations, and processes they need to begin keeping and caring for the bees. 2. allowing the new beekeeper to observe and help with Jeff's hives (e.g., introducing bees to a hive, and looking for problems in a hive. 3. allowing them to observe and collect his bees' honey. Jeff will host the new beekeepers twice at his apiary and provide hands-on assistance twice at their site. The new beekeepers will also be invited to Jeff's home to experience uncapping the honeycombs and seeing how the electric extractor works. If the new hives are able to harvest honey in the first year, they will be able to bring it along and get it processed at the same time with Jeff. Includes unlimited phone and email support. Mentorship begins before the new beekeepers pick up their bees and will last until the hives are made ready for winter. Offer limited to prospective beekeepers living in Wayne or Pike County, PA.



Fall Foliage Plane Ride over Wayne County

Departing from Cherry Ridge Airport in a Cessna 210, local history buff and experienced pilot, John Martin, will give you a 1-hour bird's-eye-view guided tour of Wayne County. You and up to three guests are invited to enjoy this special tour of our beautiful area, all while supporting SEEDS!



Your own commissioned nature mural

Local artist, Kathy Dodge, who recently completed a 3D mural for the Wayne Conservation District office, will paint a beautiful nature scene on an interior door, or comparable size. Take your door when you move to new home! Kathy is a graduate of the prestigious Rhode Island School of Design. What an incredible gift to the nature lover in your family! Comparable size is a 6' X 3' surface. Travel within 30 miles of Lake Ariel, 18436.

